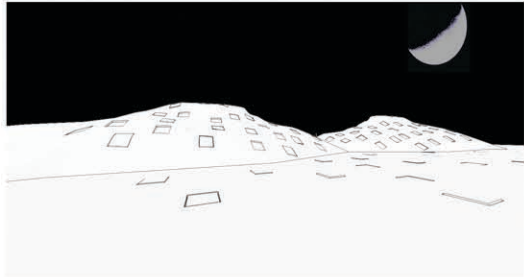


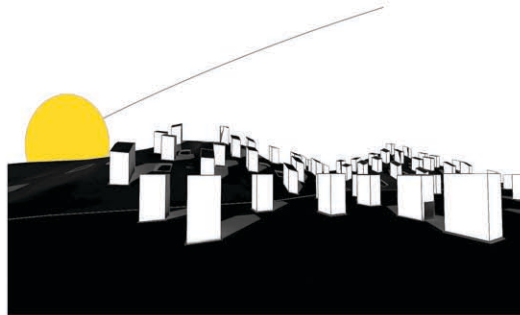
night

During the night the houses are hidden under the ground so as to avoid heat loss and prevent night light pollution.



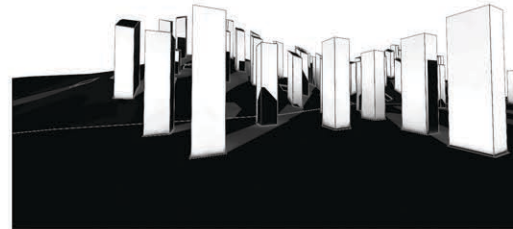
morning

In the morning buildings grow up to permit the sun to wake the inhabitants up.



midday

At midday a lot of buildings are out of the ground. It is possible that some of them are yet in the ground because the inhabitants are, for example, on holiday.



evening

In the evening the buildings fall down in the ground to preserve the sun energy of the day and the inhabitants go to sleep safe and with a very good thermal insulation thanks to the deep ground temperature.



If we think a new establishment of Residential Typology as a Future way of living, we need to face with new ways of construction. Is out of doubt, as Visionaries, to taking a direction of intellectual Freedom.

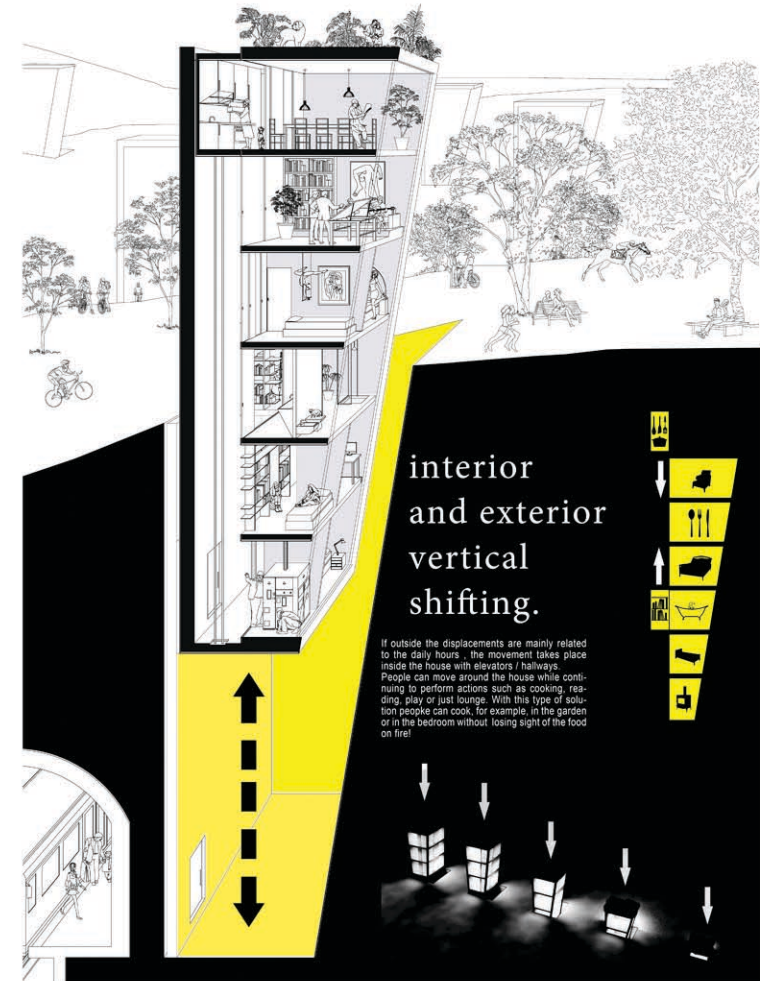
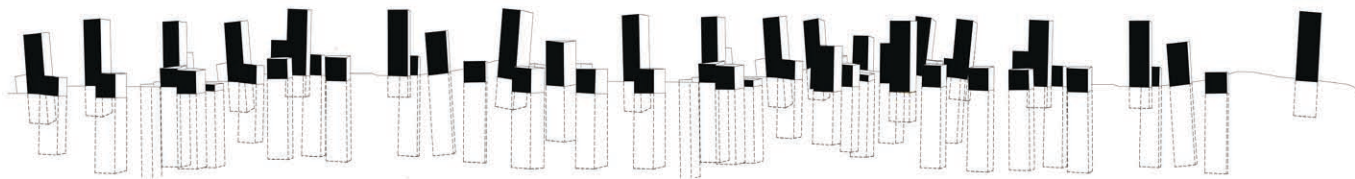
Planning places for people is a concern about **FORM | SOCIETY | FUNCTION | CONTEXT.**

“What if we don't DEAL with the CONTEXT?”

We Think about future needs, in a wide sense of it.

Instead of struggling finding the better way to face with History. We Plan using different rules.

The entire construction works as a **carrot in the ground.**
In the night you can barely see human presence. All the houses lay underground, the surface appears virgin and uncontaminated. During a day inhabitants can be delighted by a wide open and panoramic garden on the roof.



interior and exterior vertical shifting.

If outside the displacements are mainly related to the daily hours, the movement takes place inside the house with elevators / hallways. People can move around the house while continuing to perform actions such as cooking, reading, play or just lounge. With this type of solution people can cook, for example, in the garden or in the bedroom without losing sight of the food on fire!